



A.L. Wizard Installation and Setup

User Information

About A.L. Wizard

Version: ASP 2000

Print Date: February 8, 2001

Copyright

Copyright© 2000-2001 A.L. Wizard, Inc. All rights reserved.

All rights reserved. No part of this publication may be reproduced, transmitted, transcribed, stored in a retrieval system, or translated into any language in any form without prior written consent from A.L. Wizard, Inc. This software product, including the manual and media, is copyrighted and contains proprietary information that is subject to change without notice. The software may be used or copied only in accordance with the terms of the license agreement.

A.L. Wizard is a trademark of A.L. Wizard, Inc. All other trademarks or registered trademarks are acknowledged as the exclusive property of their respective owners.

A.L. Wizard, Inc.

11300 Sorrento Valley Rd., Suite 108

San Diego, California 92121

Telephone: (858) 457-0566

e-mail: support@alwizard.com

web page: <http://www.alwizard.com>

A.L. Wizard Installation and Setup

Welcome to A.L. Wizard™—a Windows® and Internet-based application for assisted living facilities. This guide describes A.L. Wizard system requirements, and provides instructions on how to download and install Citrix™ ICA Client—a program required to access and run A.L. Wizard. The main topics cover—

- System Requirements
- Downloading and Installing the ICA Client
- Who to Contact for Technical Support

System Requirements

Hardware

- A PC Pentium 233 MHz or faster processor
- A minimum 32 MB of RAM if you are running Windows 95/98, 64 MB of RAM if you are running Windows NT/2000
- 50+ MB of available hard-disk space
- 56 Kbps modem connection to the Internet; DSL, Cable Modem, or ISDN connection recommended
- Dial-up or dedicated access to the Internet via any Internet Service Provider (ISP).

NOTE Due to America On-Line's (AOL) proprietary communication structure, you will not be able to access and use A.L. Wizard using AOL.

Software

- Microsoft Windows 95/98 operating system or later, Microsoft NT Workstation operating system version 4.0 or later with SP3 or later
- Microsoft Internet Explorer version 5.0 or later
- Citrix™ ICA Client Software for Win32 Operating Systems, downloaded from ALWizard, Inc. servers.

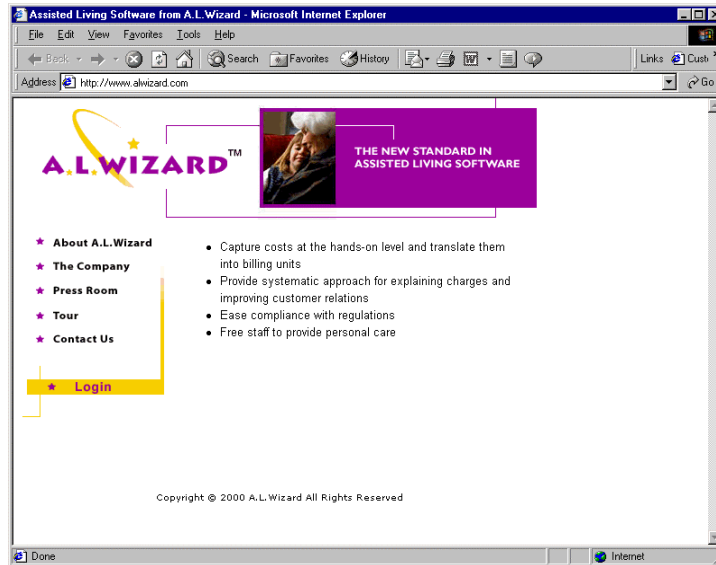
Downloading and Installing the ICA Client

To run A.L. Wizard on your system, you must first download and install a software program called "Citrix ICA Client". The steps below will walk you through the download and setup process.

NOTE The instructions assume that you are connected to the Internet, and that you are using Microsoft Internet Explorer 5.0 or higher as your Internet browser.

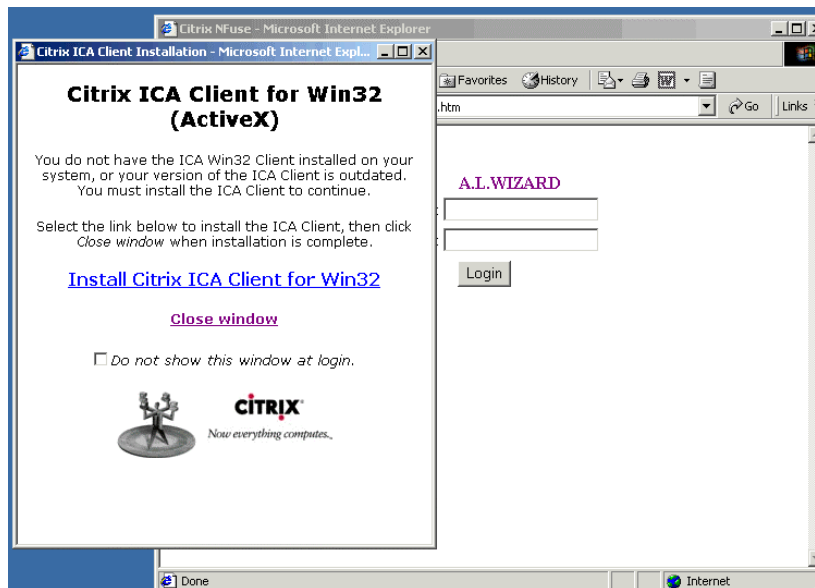
◆ **To download and install the Citrix ICA Client—**

1. Connect to the Internet.
2. Double-click the **Internet Explorer** icon on your desktop, type *http://www.alwizard.com* in the **Address** bar, and then click **Go** or press ENTER. This brings up the A.L. Wizard home page as shown below.



A.L. Wizard home page

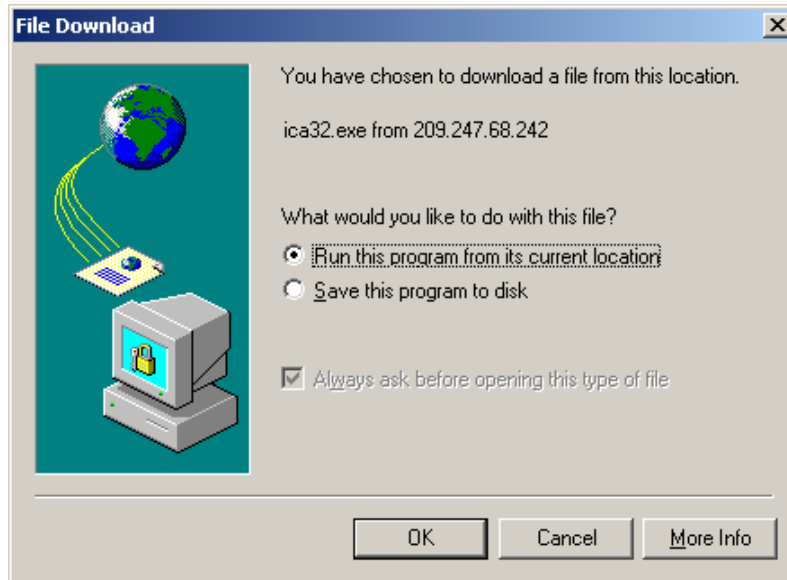
3. Click the **Login** button located in the lower left portion of the screen. When you setup A.L. Wizard for the first time, the system next displays the **Citrix NFuse Login** screen and the **Citrix ICA Client Installation** screen.



Citrix ICA Client Installation and Citrix NFuse Login screens

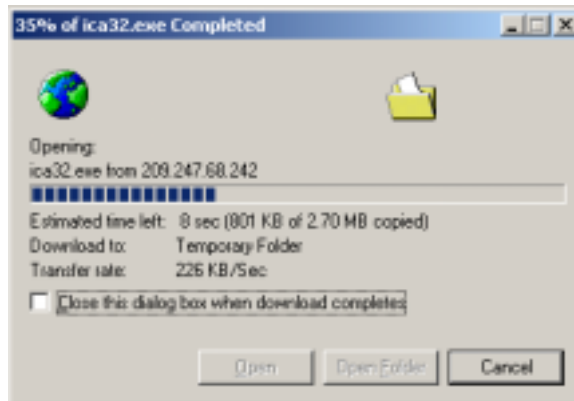
NOTE After you download and install the program, the Citrix ICA Client Installation screen will not appear the next time you log into the A.L. Wizard server.

- Click the **Install Citrix ICA Client for Win32** link. This brings up the **File Download** screen. (See below.)



File Download screen

- In the **File Download** screen, choose **Run this program from its current location**, and then click **OK**. A progress indicator will appear as the file transfers to a temporary folder on your system.



File Download Progress Indicator

NOTE This download can take from a few seconds to 20 minutes depending on your Internet connection. Then the system displays the **Security Warning** screen, shown below.



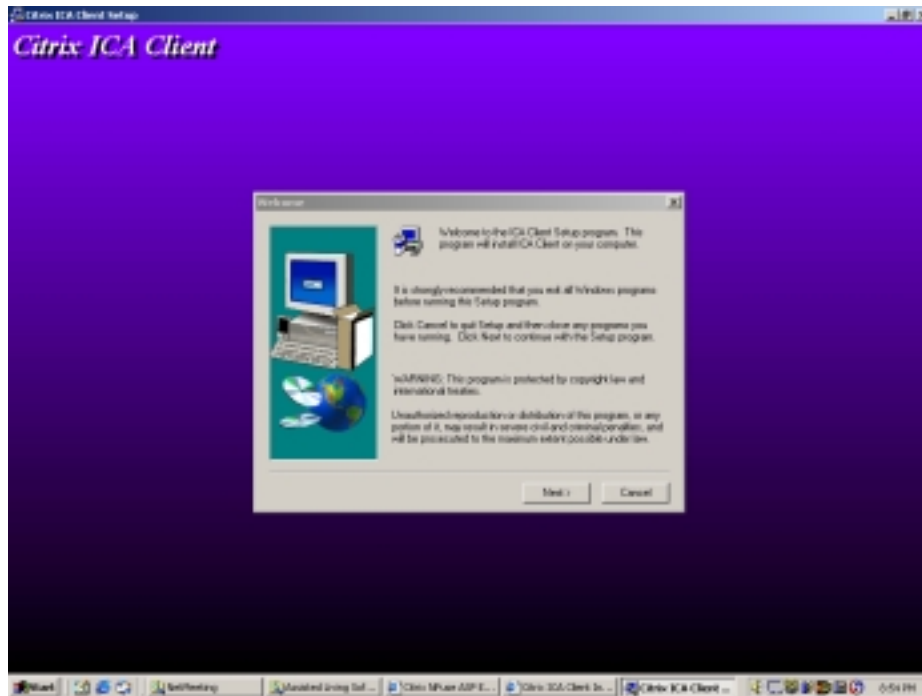
Security Warning screen

6. In the **Security Warning** screen, click the **Yes** button. Next, you will see the **Citrix ICA Client – InstallShield Wizard** screen.



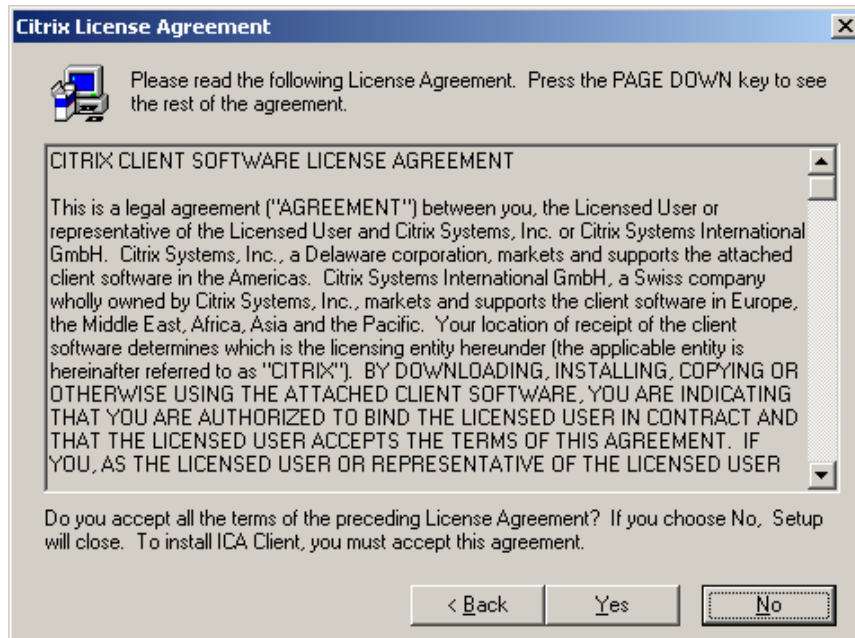
Citrix ICA Client – InstallShield Wizard screen

- Click **Next**. This starts the Citrix ICA Client Setup program. The next screen you will see is the **Welcome** screen, as shown below.



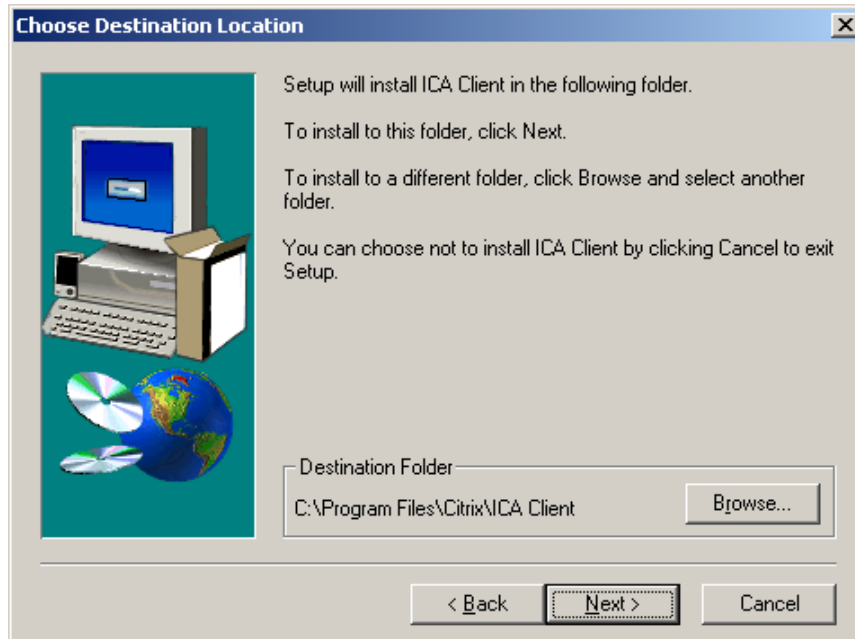
Citrix ICA Client Welcome screen

- At the **Welcome** screen, click **Next**.



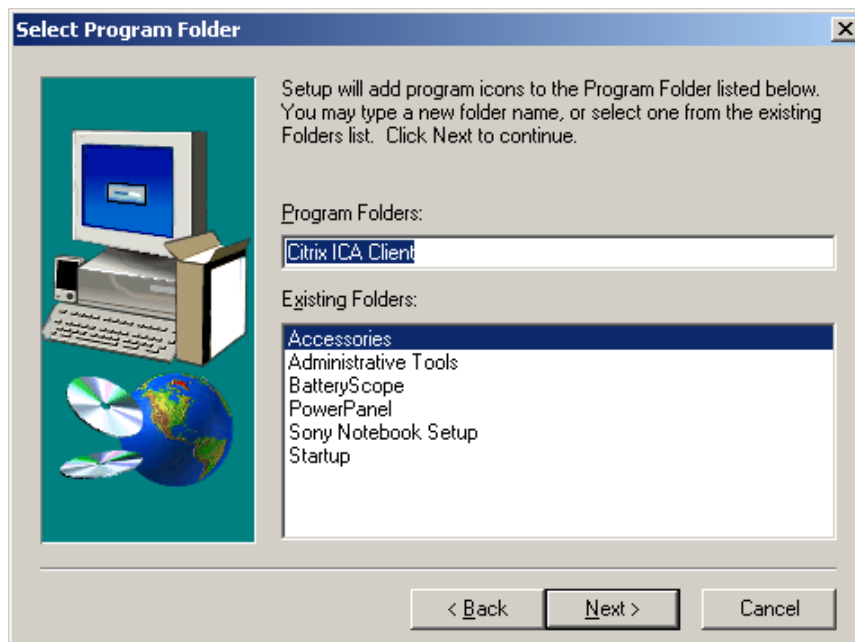
Citrix License Agreement screen

9. At the **Citrix License Agreement** screen, read the license agreement, and then click **Yes** to accept the agreement. (Otherwise, click **No** to cancel the setup.)



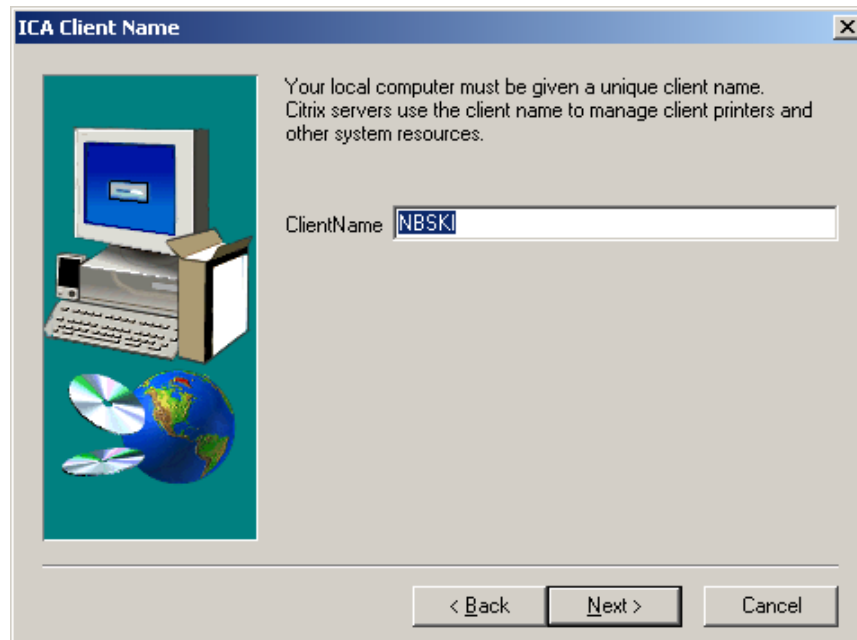
Choose Destination Location screen

10. At the **Choose Destination Location** screen, click **Next**.



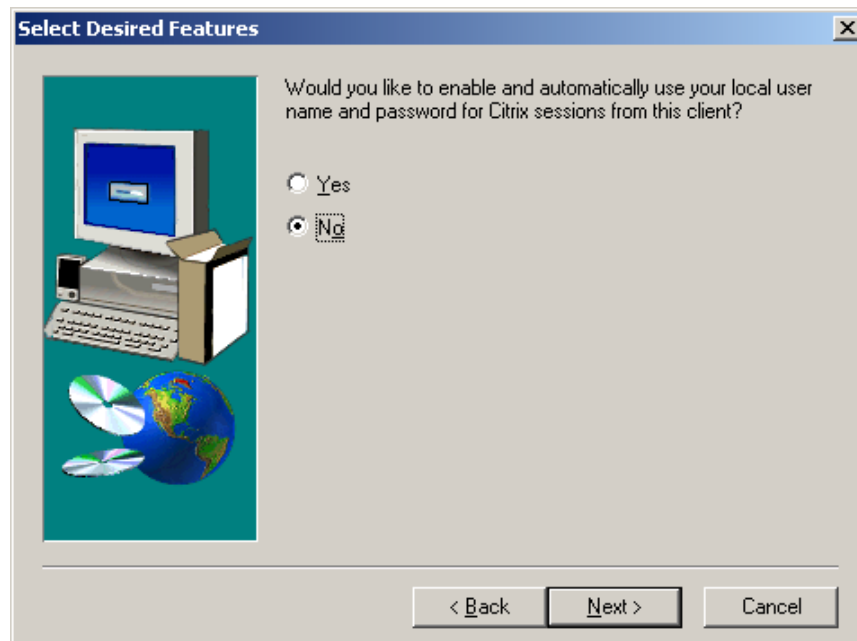
Select Program Folder screen

11. At the **Select Program Folder** screen, click **Next**.



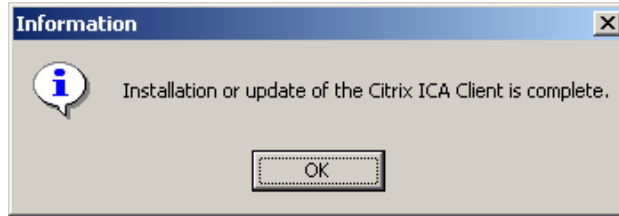
ICA Client Name screen

12. At the **ICA Client Name** screen, click **Next**.



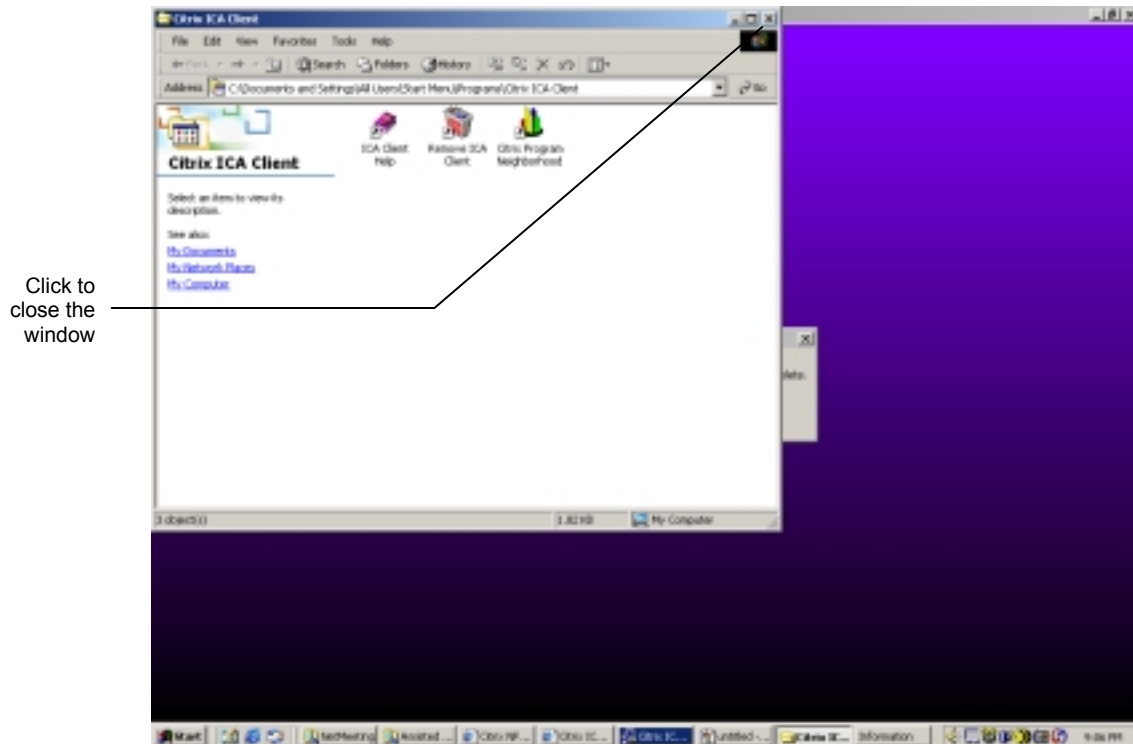
Select Desired Features screen

13. At the **Select Desired Features** screen, make sure **No** is selected, and then click **Next**. The Setup program will next display a progress indicator as the setup program copies files and configures your system. When the process is complete, you will see a message box.



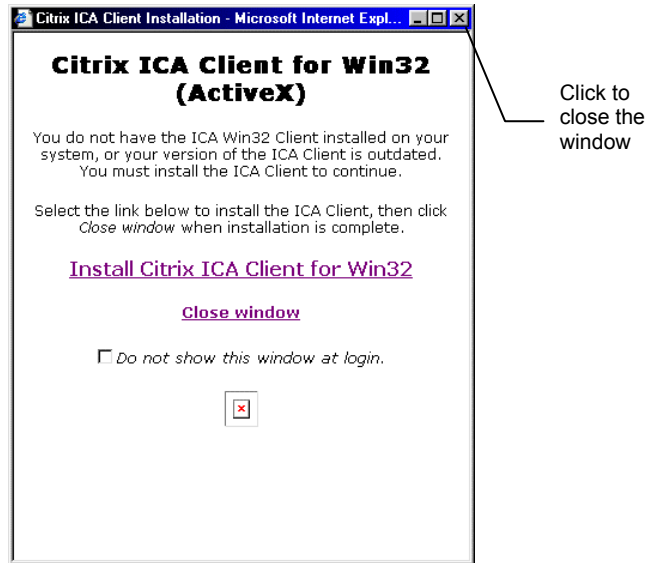
Information message box

14. Click **OK** in the **Information** message box to finish the installation.



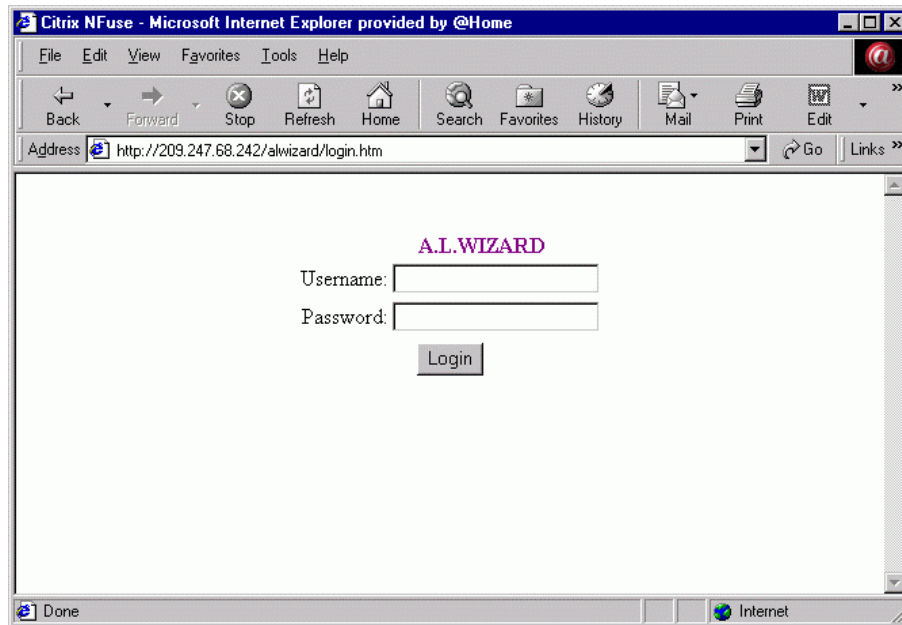
Citrix ICA Client window

15. Click "X" to close the **Citrix ICA Client** startup window, shown above.



Citrix ICA Client Installation screen

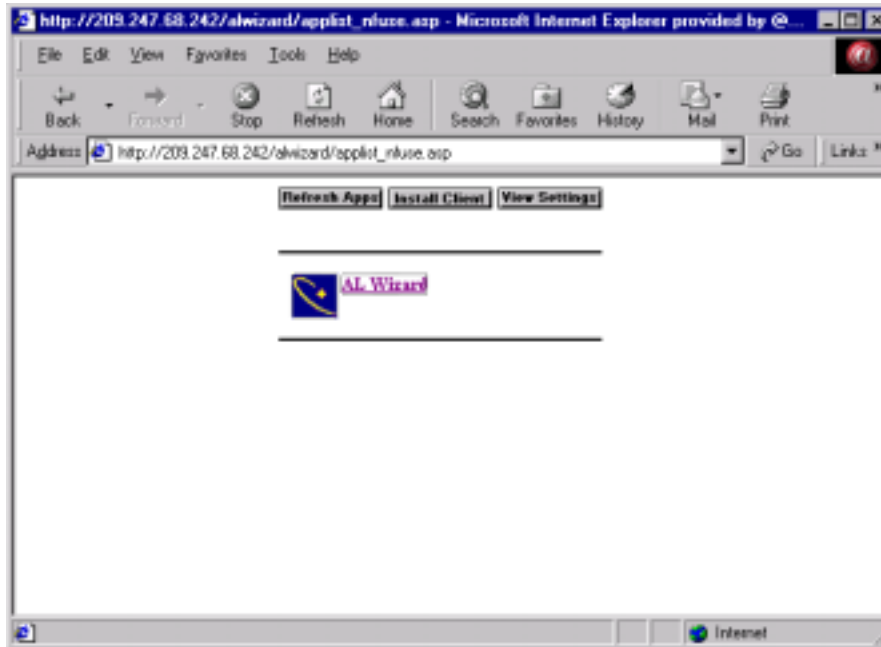
16. Click “X” to close the **Citrix ICA Client Installation** window. The **Citrix NFuse Login** screen is now visible, as shown below.



Citrix NFuse Login screen

17. Complete the **Citrix NFuse Login** screen as follows:
- Enter your **Username**, then press the Tab key
 - Enter your **Password**, then press the Tab key
 - Click the **Login** button

At this point, the A.L. Wizard server will look to see if the required client components are installed on your system. If all components are present, the server will publish the ALWizard Icon to a browser page for you to start the program. (See below).



A.L. Wizard Program Icon

This completes the client software download and setup process. To start the application, click the A.L. Wizard icon.

Who To Contact for Technical Support

If you encounter any difficulties using A.L. Wizard, consult the following sources of information—

- The A.L. Wizard User's Guide
- A.L. Wizard Online Help
- Any release notes or README files that accompany the application
- Your Internet Service Provider if you suspect a network problem or inability to connect to the Internet.
- The appropriate hardware manuals if you suspect a hardware problem

If you continue to experience problems, contact A.L. Wizard Technical Support or send email to the Technical Support Team at support@alwizard.com.